

SECTION AND OUTLET DETAIL
NTS

LEGEND

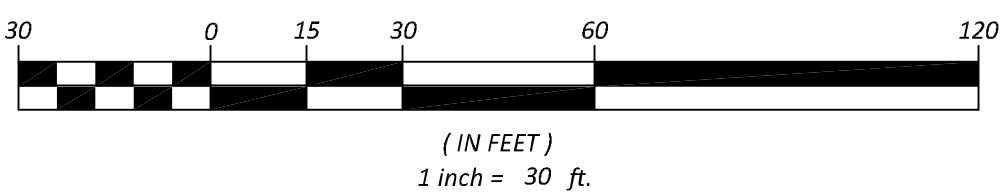
- PROPERTY LINE
- - - EXISTING CONTOUR
- - - EDGE OF ROAD/PARKING
- - - DRAINAGE COURSE
- - - FENCE
- W - WATER LINE
- S - SEWER LINE
- ST - STORM DRAIN LINE
- ⊙ SEWER MANHOLE
- CATCH BASIN

CONCEPT

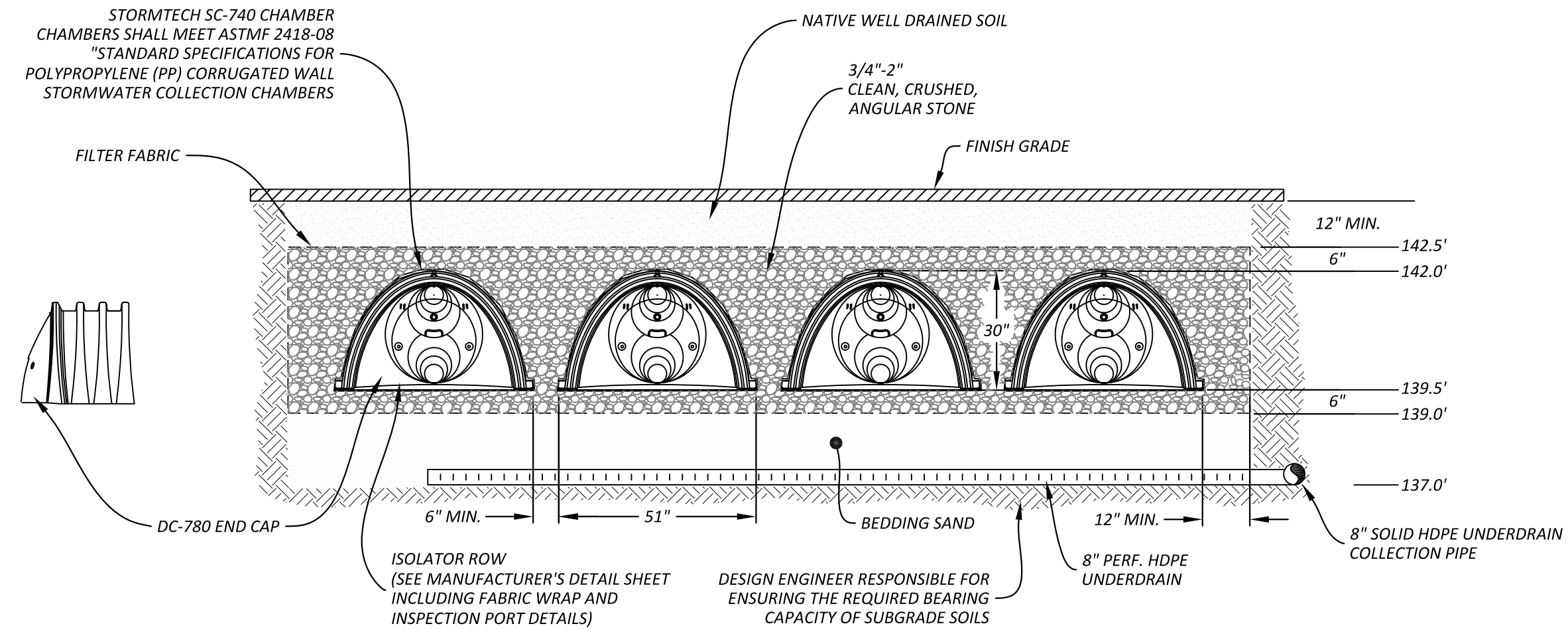
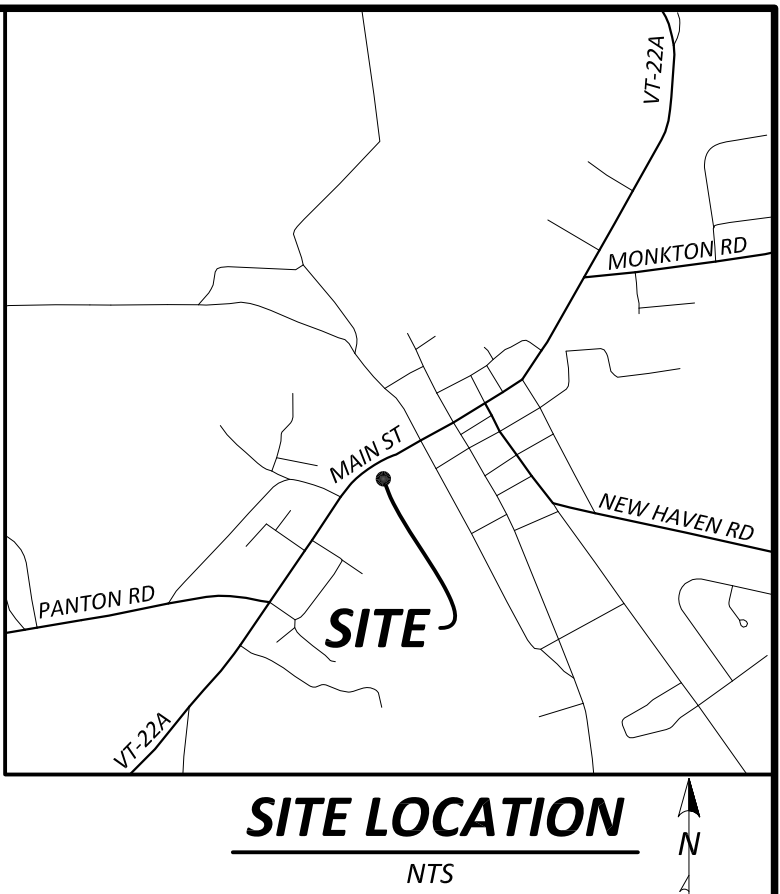
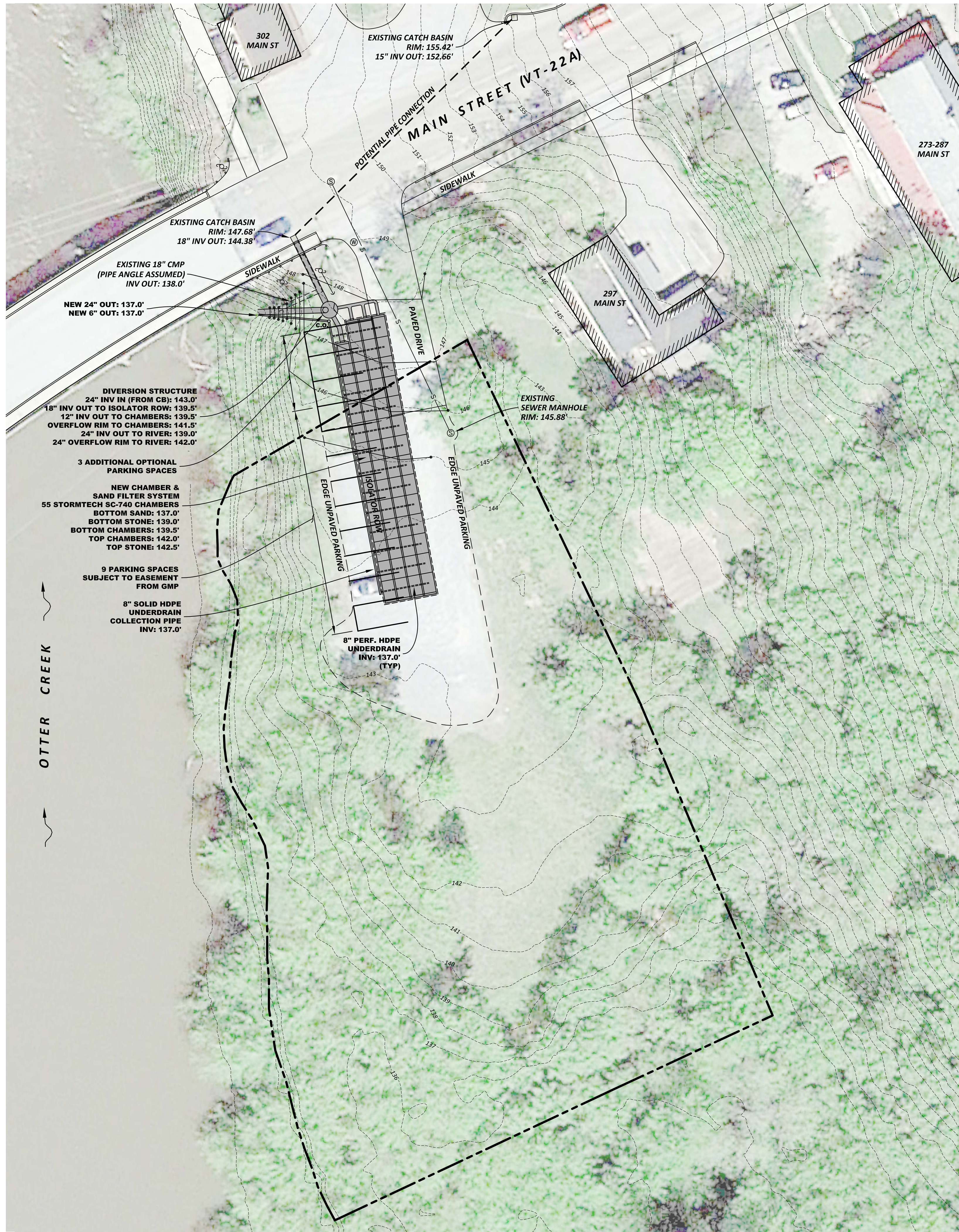
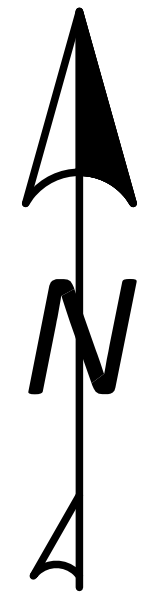
NOTES

1. THIS IS NOT A BOUNDARY SURVEY. BOUNDARY INFORMATION IS FROM TAX MAPS AND IS APPROXIMATE.
2. STORMWATER INFRASTRUCTURE ELEVATIONS SHOWN ARE FROM TOTAL STATION SURVEY CONDUCTED BY THIS OFFICE ON 1-25-18. EXISTING TOPOGRAPHIC CONTOURS ARE FROM ADDISON COUNTY LIDAR.
3. THE PRESENCE OF UNDERGROUND UTILITIES WAS NOT FIELD LOCATED DURING TOPOGRAPHIC SURVEY. WATER LINE SHOWN ON PLANS IS FROM STATE PERMIT #WW-9-0387 AND IS APPROXIMATE. ALL UNDERGROUND UTILITIES MUST BE LOCATED PRIOR TO ANY CONSTRUCTION OR DISTURBANCE.

SITE PLAN



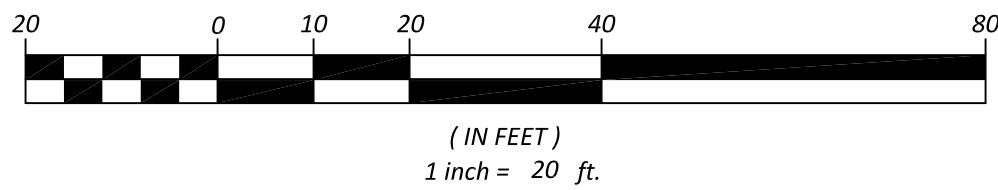
VERGENNES STORMWATER MASTER PLAN



LEGEND

- PROPERTY LINE
- EXISTING CONTOUR
- FINISH GRADE CONTOUR
- EDGE OF GRAVEL
- GUARD RAIL
- SEWER LINE
- UTILITY POLE
- SEWER MANHOLE
- WATER VALVE
- CATCH BASIN

SITE PLAN



NOTES

- THIS IS NOT A BOUNDARY SURVEY. BOUNDARY INFORMATION IS FROM TAX MAPS AND IS APPROXIMATE.
- UTILITY INFRASTRUCTURE ELEVATIONS SHOWN ARE FROM TOTAL STATION SURVEY CONDUCTED BY THIS OFFICE ON 1-25-18. EXISTING TOPOGRAPHIC CONTOURS ARE FROM ADDISON COUNTY LIDAR.
- THE PRESENCE OF UNDERGROUND UTILITIES WAS NOT FIELD LOCATED DURING TOPOGRAPHIC SURVEY. ALL UNDERGROUND UTILITIES MUST BE LOCATED PRIOR TO ANY CONSTRUCTION OR DISTURBANCE.

CONCEPT

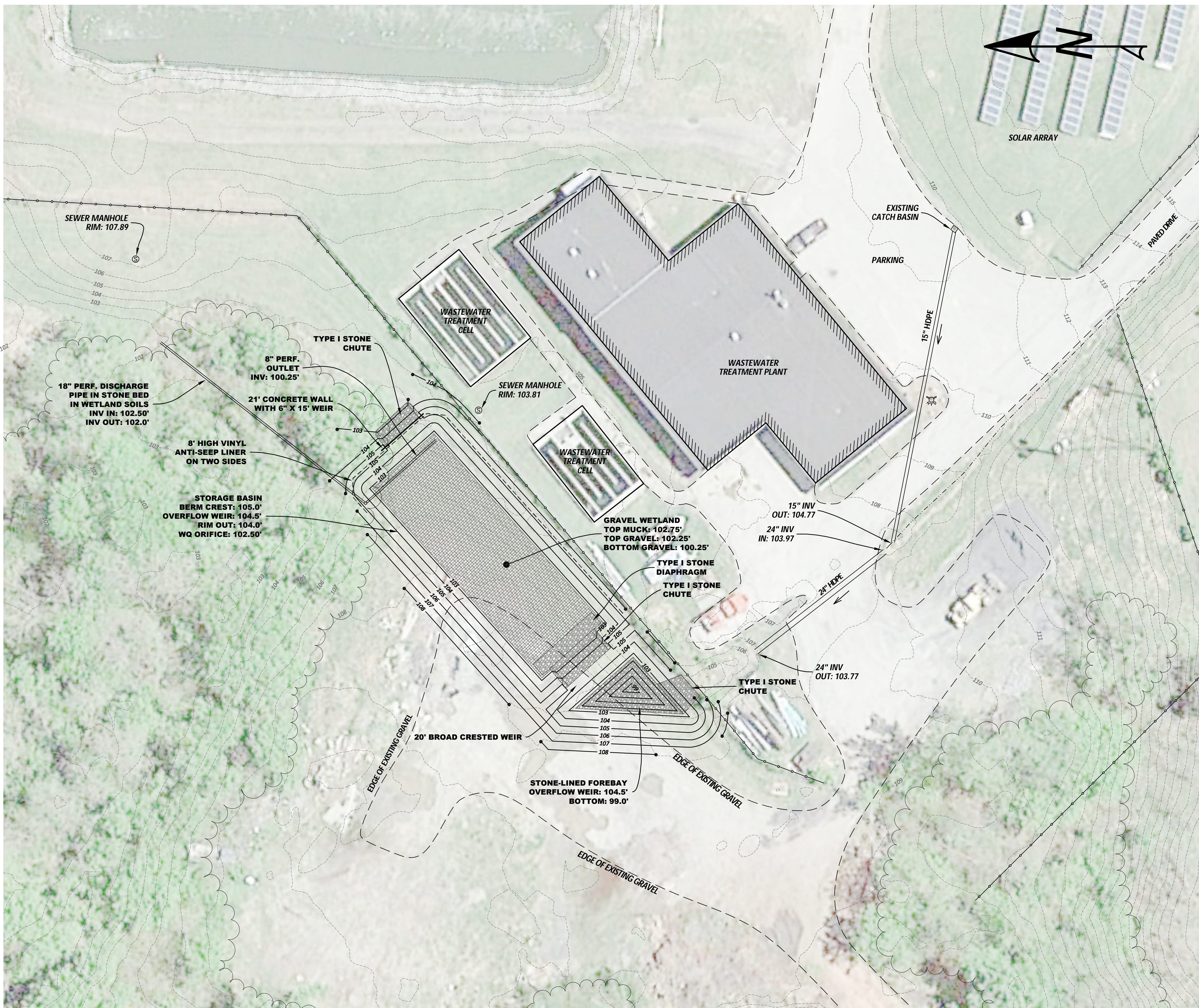
VERGENNES STORMWATER MASTER PLAN
VERGENNES, VERMONT

SETTLERS PARK SITE

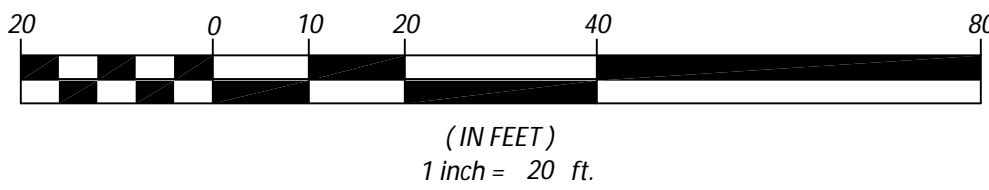


Stormwater Management | Water Quality | Erosion Control
208 Flynn Ave, Suite 2H P.O. Box 4413
Burlington, VT 05406
Mobile: 802.922.4871 | Main: 802.497.2367
www.watershedca.com

APPROVED BY:	AT/DA	DRAWN BY:	SM5	SCALE:	NOTED
DATE:	3-28-18	CHECKED BY:	AT/DA	SHEET:	1 OF 1



SITE PLAN

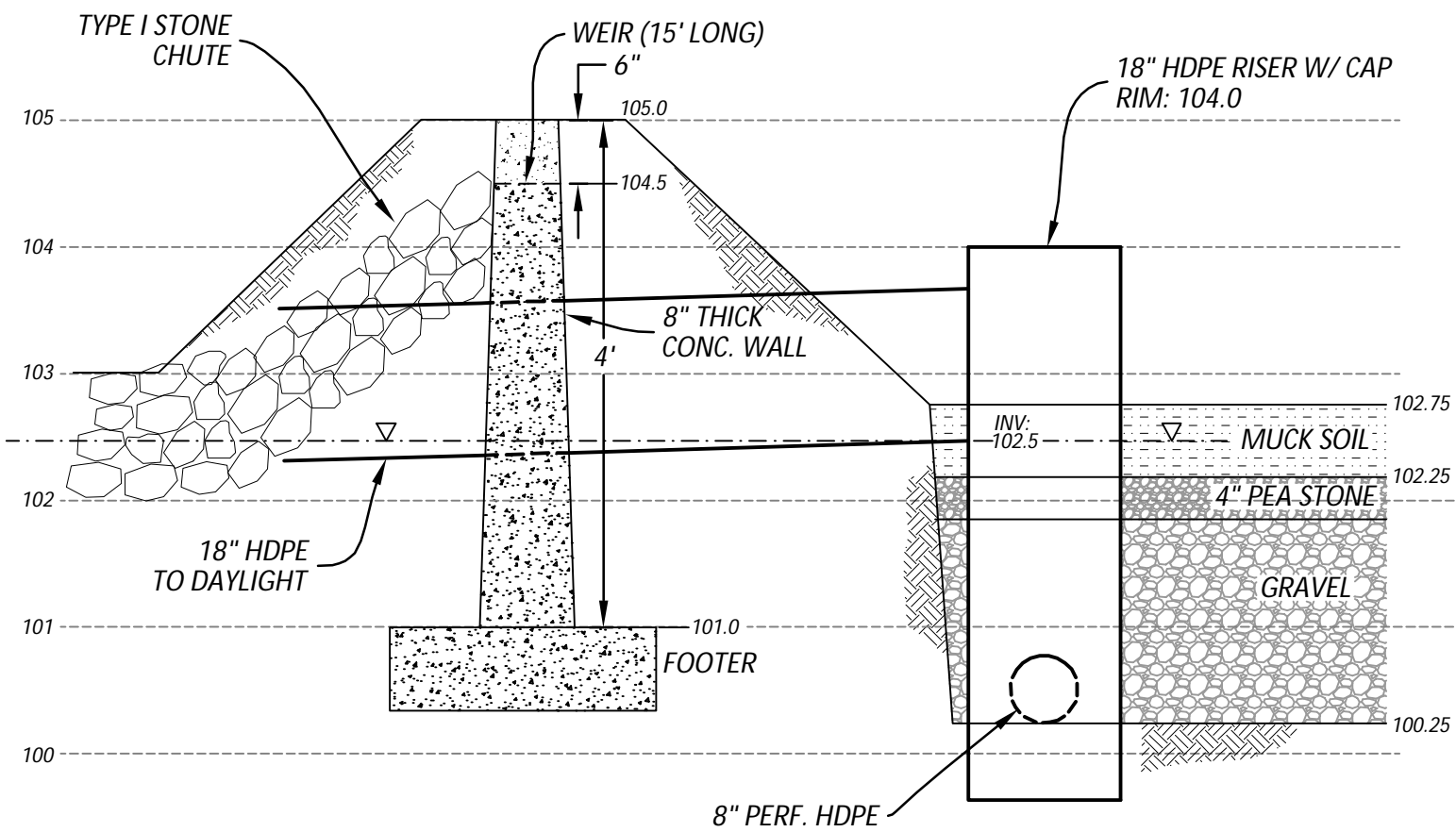
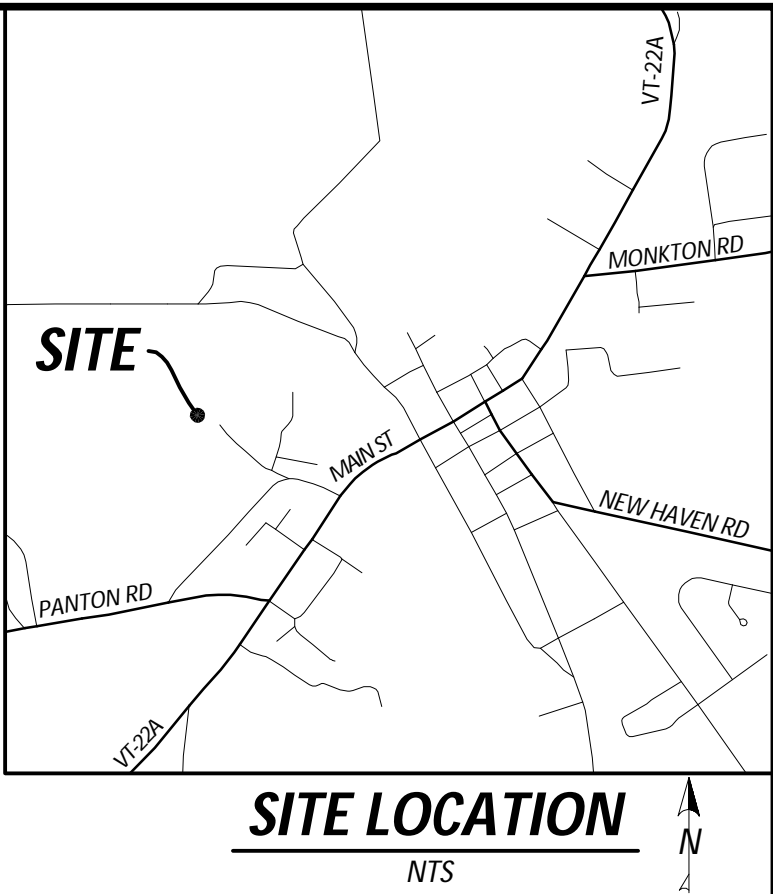


LEGEND

- EXISTING CONTOUR
- EDGE OF ROAD/PARKING/WALKWAY
- DRAINAGE SWALE
- FENCE
- TREE LINE
- UTILITY POLE
- SEWER MANHOLE
- HYDRANT
- CATCH BASIN

NOTES

- THIS IS NOT A BOUNDARY SURVEY. BOUNDARY INFORMATION IS FROM TAX MAPS AND IS APPROXIMATE.
- UTILITY INFRASTRUCTURE ELEVATIONS SHOWN ARE FROM TOTAL STATION SURVEY CONDUCTED BY THIS OFFICE ON 1-25-18. EXISTING TOPOGRAPHIC CONTOURS ARE FROM ADDISON COUNTY LIDAR.
- THE PRESENCE OF UNDERGROUND UTILITIES WAS NOT FIELD LOCATED DURING TOPOGRAPHIC SURVEY. ALL UNDERGROUND UTILITIES MUST BE LOCATED PRIOR TO ANY CONSTRUCTION OR DISTURBANCE.



OUTLET WORKS DETAIL

TYPE I STONE FILL
(VAOT SEC. 706.04(A))
THE LONGEST DIMENSION OF THE STONE SHALL VARY FROM 1 INCH TO 12 INCHES, AND AT LEAST 50 PERCENT OF THE VOLUME OF THE STONE IN PLACE SHALL HAVE A LEAST DIMENSION OF 4 INCHES.

CONCEPT

VERGENNES STORMWATER MASTER PLAN
VERGENNES, VERMONT

WASTEWATER TREATMENT PLANT SITE



Stormwater Management | Water Quality | Erosion Control
208 Flynn Ave, Suite 2H P.O. Box 4413
Burlington, VT 05406
Mobile: 802.922.4871 | Main: 802.497.2367
www.watershedca.com

APPROVED BY:	AT/DA	DRAWN BY:	SMS	SCALE:	NOTED
DATE:	5-4-18	CHECKED BY:	AT/DA	SHEET:	1 OF 1